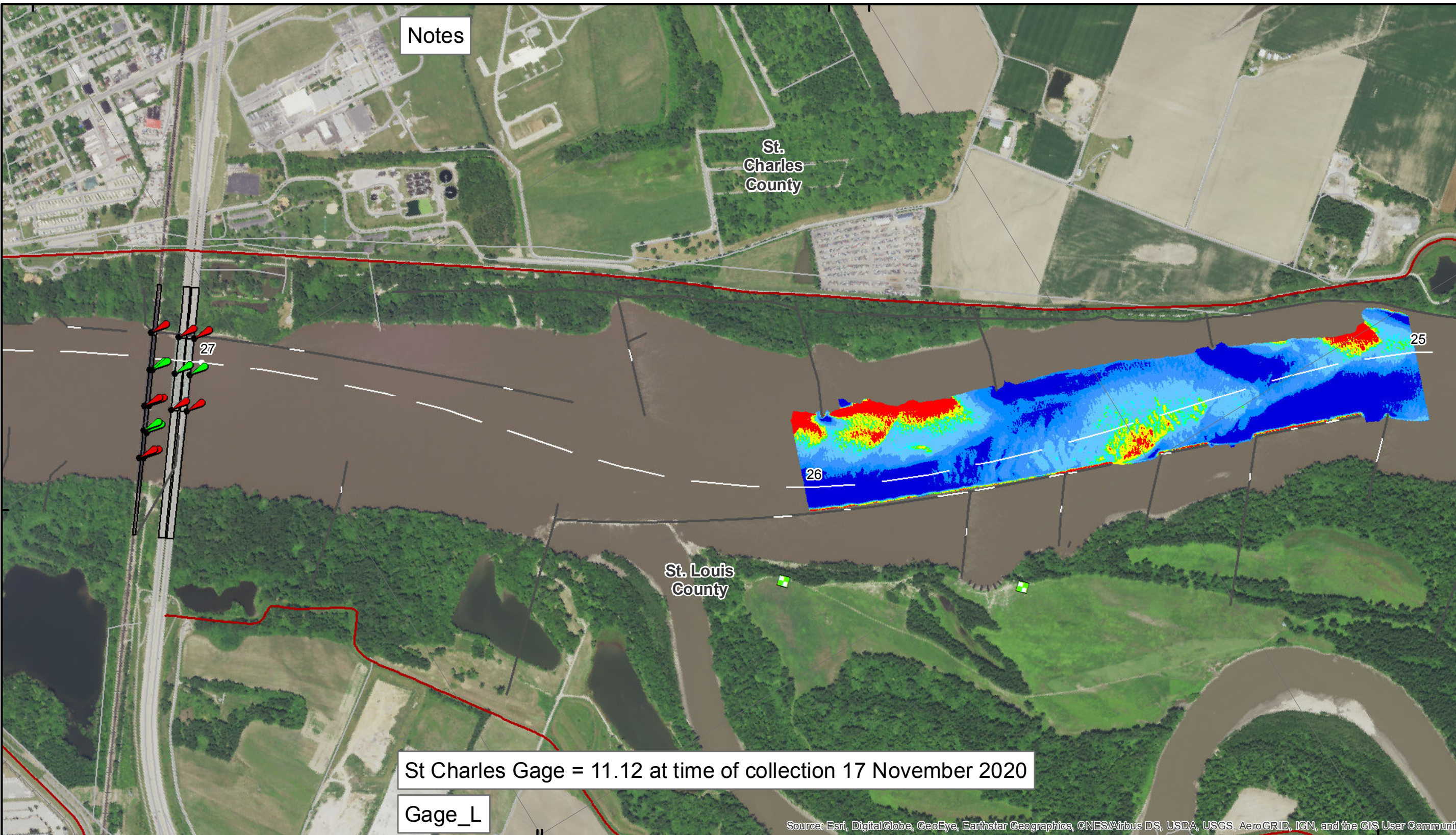


38°48'N

90°28'W 38°49'N



Notes

St. Charles County

St. Louis County

St Charles Gage = 11.12 at time of collection 17 November 2020

Gage_L

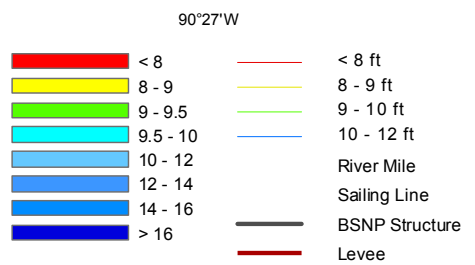
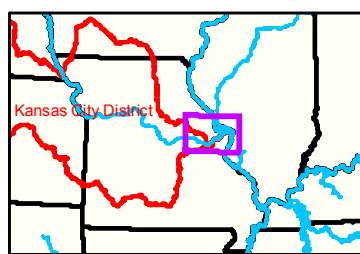
Source: Esri, DigitalGlobe, GeoEye, Earthstar Geographics, CNES/Airbus DS, USDA, USGS, AeroGRID, IGN, and the GIS User Community



DISCLAIMER: The data represents the results of a survey conducted by the U.S. Army Corps of Engineers. The data is provided for informational purposes only and is not intended for use in any legal proceeding. The data is not a warranty, representation, or endorsement of any product or service. The data is provided as-is and the user assumes all liability for any use of the data. The data is not to be used for navigation purposes. The data is not to be used for any other purpose. The data is not to be used for any other purpose. The data is not to be used for any other purpose.

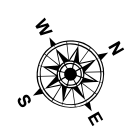
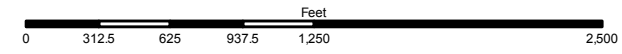
| | |
|--|------|
| KANSAS CITY DISTRICT MISSOURI RIVER AREA OFFICE | |
| Surveyed By: | MRAO |
| Reviewed By: | MRAO |
| Checked By: | MRAO |
| Approved: | |

Survey Information
MO_01_LMR
MO_01_LMRX_20201117_CS_25_0_26_0_SORT
17 November 2020



- LEGEND**
- Green Passing
 - Red Passing
 - Green Crossing
 - Red Crossing

- Buoy**
- Green
 - Red
 - Junction
 - Green CAN
 - Red NUN



NOTES:
Horizontal Coordinate System: World Geodetic System of 1984 (WGS84), projected to the Universal Transverse Mercator (UTM) Zone 15 North. Distance units in U.S. Survey Feet.
Vertical Datum: Soundings are shown in feet and indicated depths are referenced to water surface at time of collection.
The information depicted on this map represents the results of a survey conducted on the date indicated and can only be considered to represent the general condition existing at that time.
The location of navigation aids are based on and provided by the U.S. Coast Guard.

Sheet Number
12 of 46